

BENCHMARK HOMES

Your Dreams...Our Commitment

Lantana Ridge
349 Lantana Crossing
Spring Branch, TX 78070

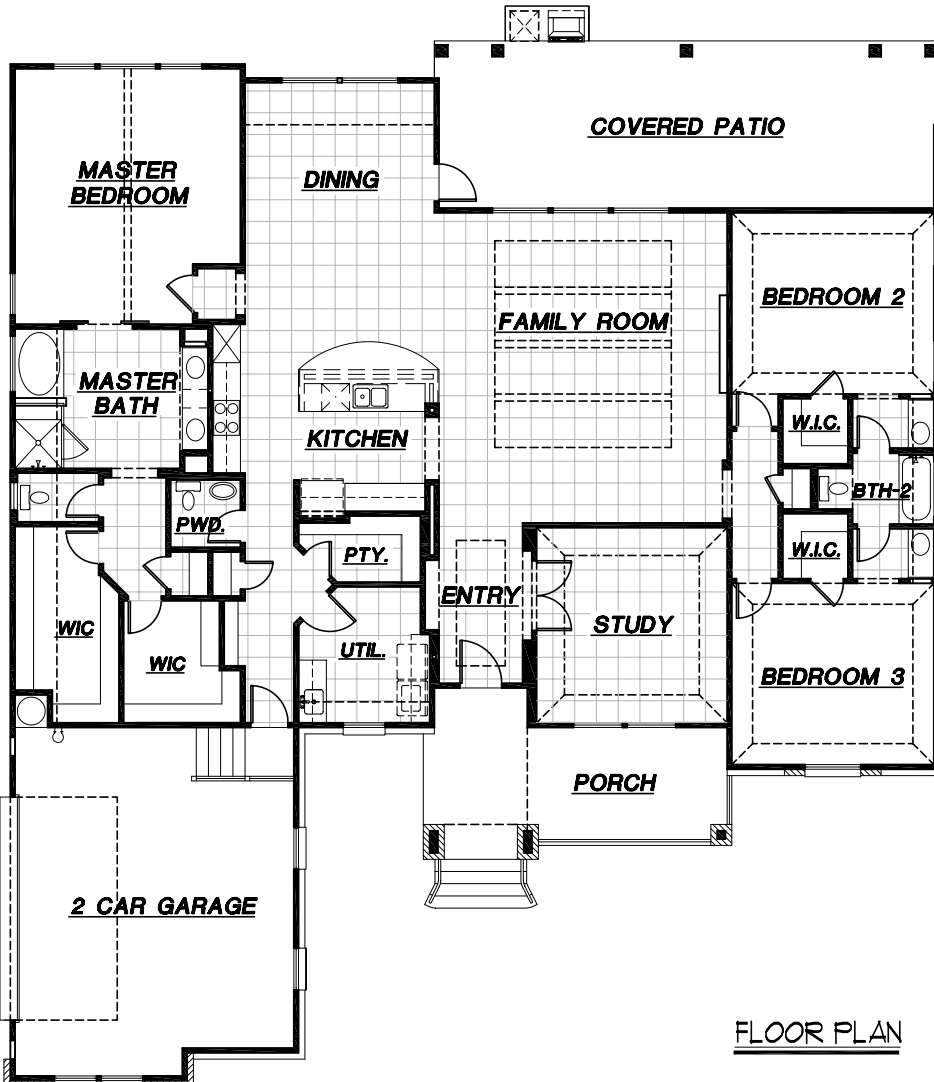


FRONT ELEVATION

Please call 210-278-4772
for more information
\$463,900

This Home Features:

- Approx. 2830 sq. ft. single story
- 3 Bedroom, 2-1/2 Bath
- 1 acre lot
- Large covered patio with outdoor grilling station and refrigerator
- Decorative ceiling treatments
- Granite countertops at kitchen w/ designer backsplash
- Painted maple cabinets throughout w/ full extension & soft close
- Wood-look tile in family, kitchen, dining, study, and hallways
- 12 x 24 designer tile at Master bath
- Mud set shower with bench seat
- Oversized 2 car side load garage
- Granite countertops at bathrooms with deco tile
- Interior fireplace
- Large pantry & utility room
- Mudroom built-ins at hallway
- Double closet at Master
- Jack & Jill bath at Bedrooms 2 & 3



FLOOR PLAN

Floorplans are artist's conceptions. All plans, features and specifications shown are subject to change without notice and may vary by community. Square footages are approximate.

